

Rotary gate valve DSR

Allgemeine Informationen

Description

1. General characteristics

The RMA rotary gate valve type “DSR” is an extremely robust welded steel, dust resistant shut-off valve for installation in gas pipelines (coking plants, fission- and natural gas).

2. Construction / Function

The main features of this metal-sealing, single-plate-parallel valve are the precision machined-lipped surfaces of gate and sealing plates, which are floating-mounted, by preapplication with spring-washers. This system ensures a movement of close-plate over entire swivelling range without gaps.

The totally gapless metal seal prevents penetration of dirt during opening and closing of close-plate. At the same time a consistent and undamaged sealing surface is preserved which guarantees lasting operation life.

In the open position, a full passage is ensured. The flow direction is from weld end to vent plug. To ensure permanent lubrication of moving parts, interior housing is filled with a special oil.

The drain plug on top of housing serves for oil-filling and level checking.

3. Corrosion prevention

The outer shell has as standard a PUR (polyurethane) coating.

4. Vent pipe

See page 5

5. Reception test

DIN 3230 part 5 test group PG 3.

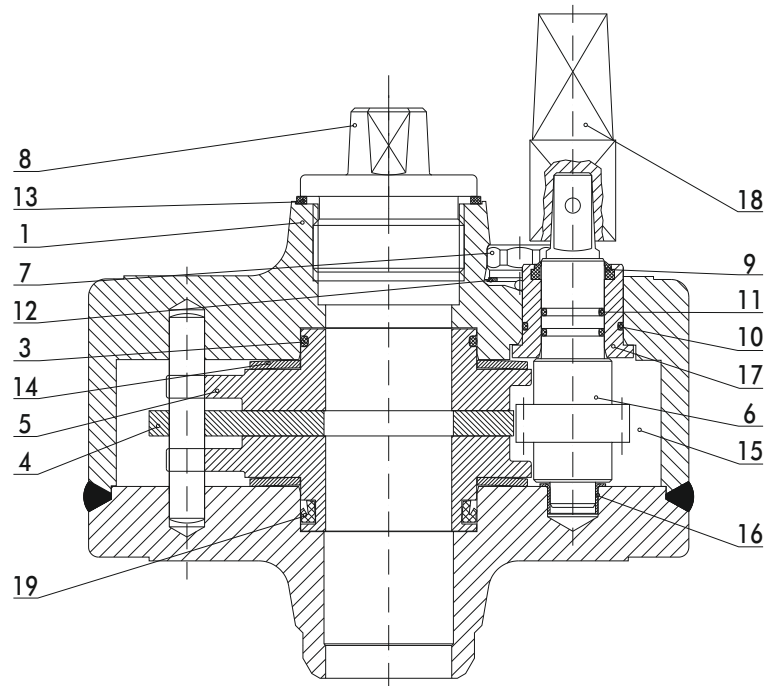
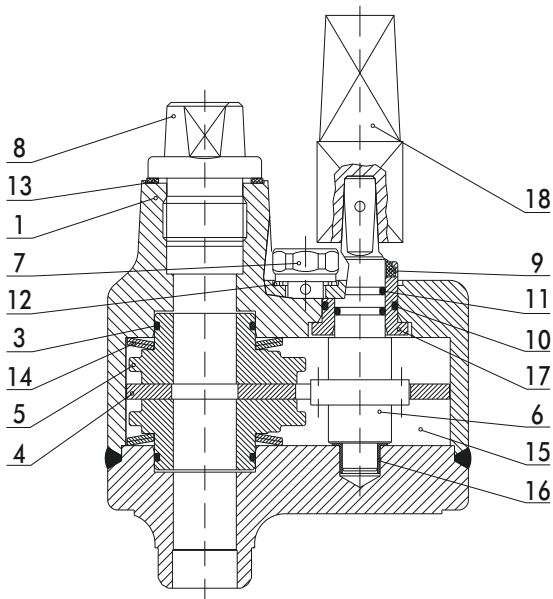
6. Additional document

Operating-, Maintenance-, and Repair Instructions.

Rotary gate valve DSR

DN 25

DN 50

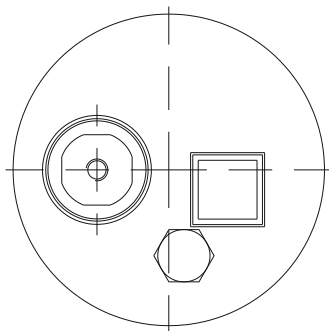
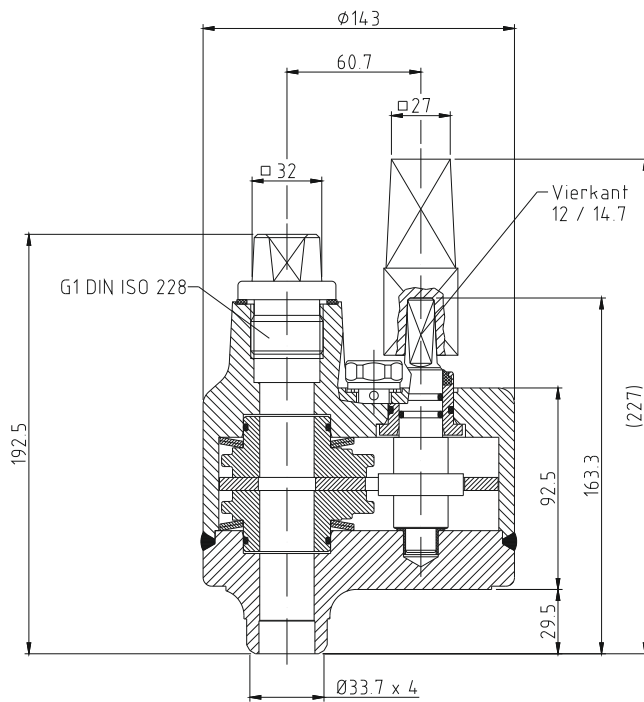


Item.	Description
1	Housing
3	O-ring
4	Gate
5	Sealing plate
6	Pinion shaft
7	Drain plug
8	Vent plug
9	Lip seal
10	O-ring
11	O-ring
12	Seal ring
13	Seal ring
14	Single Belleville spring
15	Oil filling
16	Bearing bush
17	DU bearing bush
18	Stem square cap
19	Seal ring

Description	Material
Housing / union pipe	P285NH
Gate	P265GH

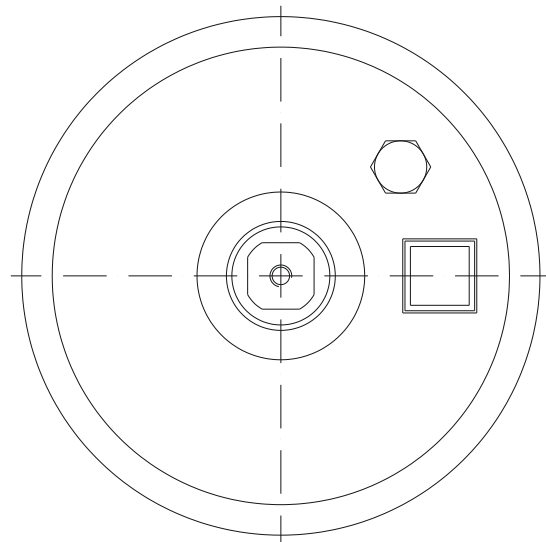
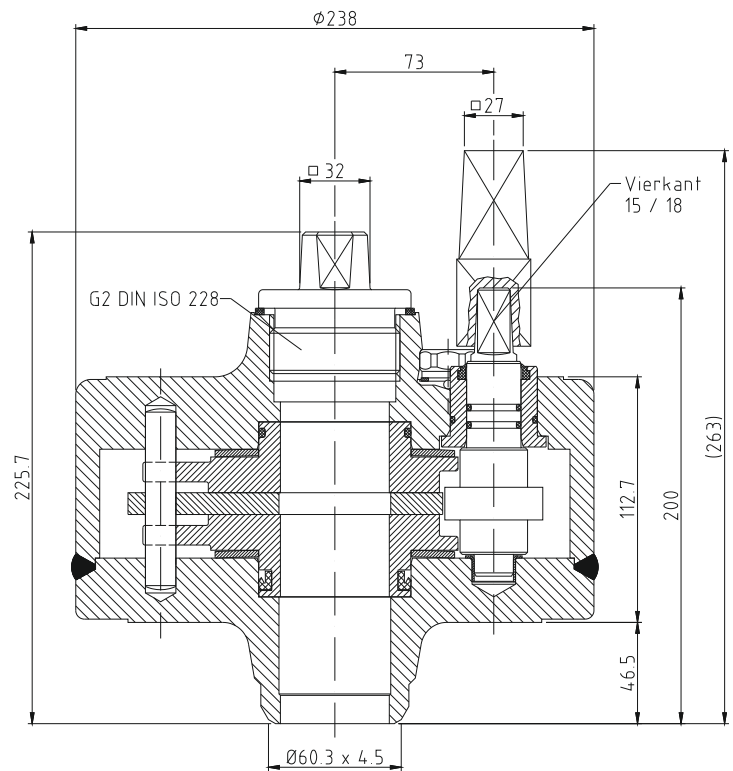
Rotary gate valve DSR

DN 25



Weight:
DSR DN 25: 10 kg

DN 50

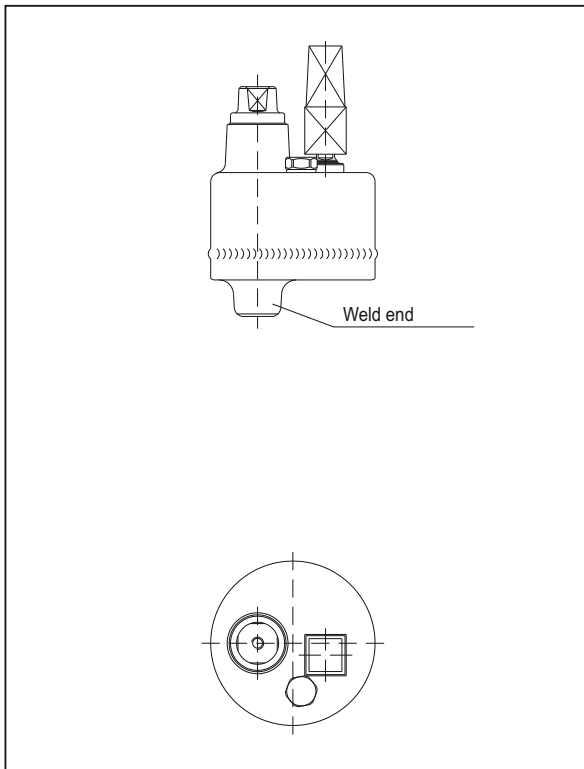


Weight :
DSR DN 50: 30 kg

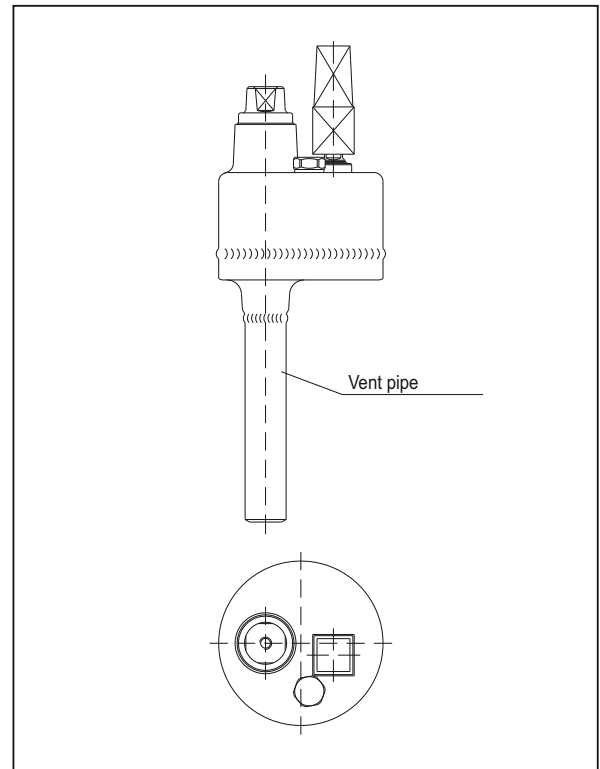
These dimensions apply to pressure ratings PN 4 - 100

Rotary gate valve DSR

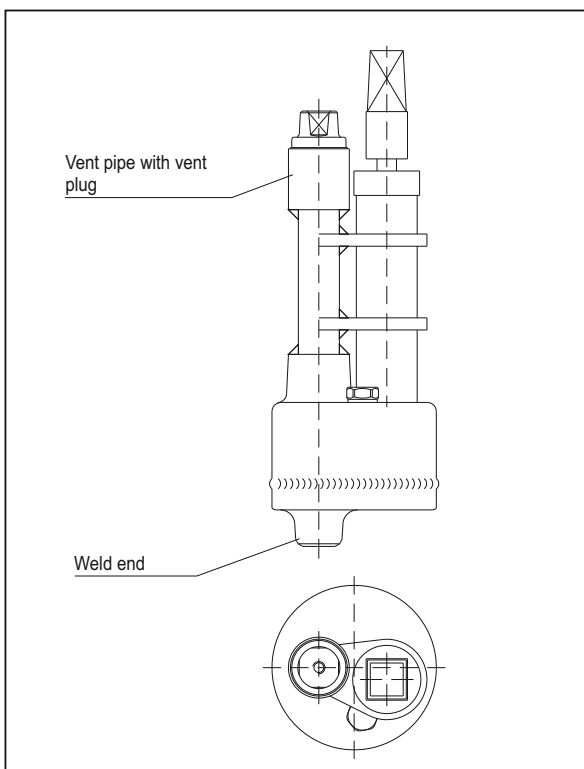
Picture 1
Standard model



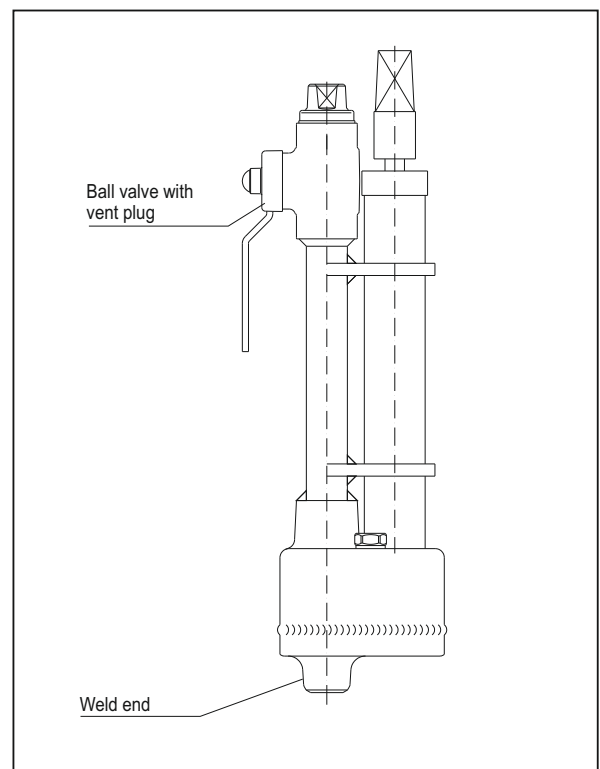
Picture 2
With bottom arranged vent pipe



Picture 3
With top arranged vent pipe

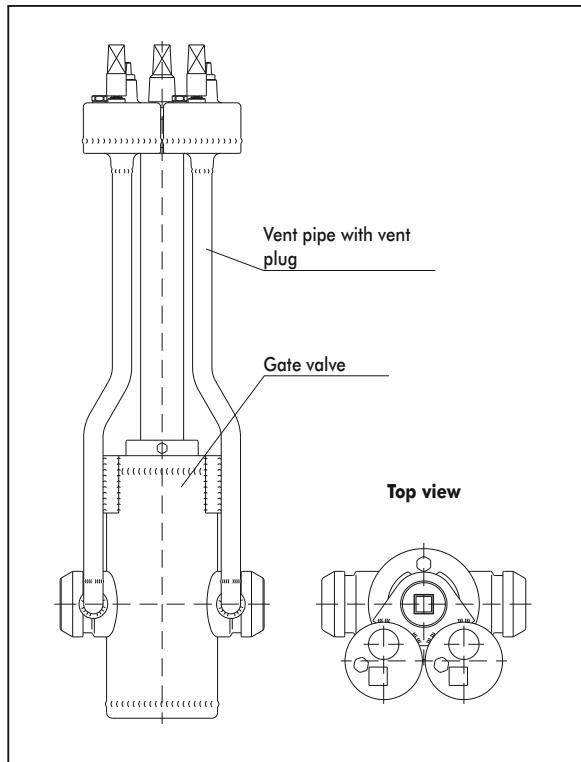


Picture 4
With top arranged vent pipe and ball valve

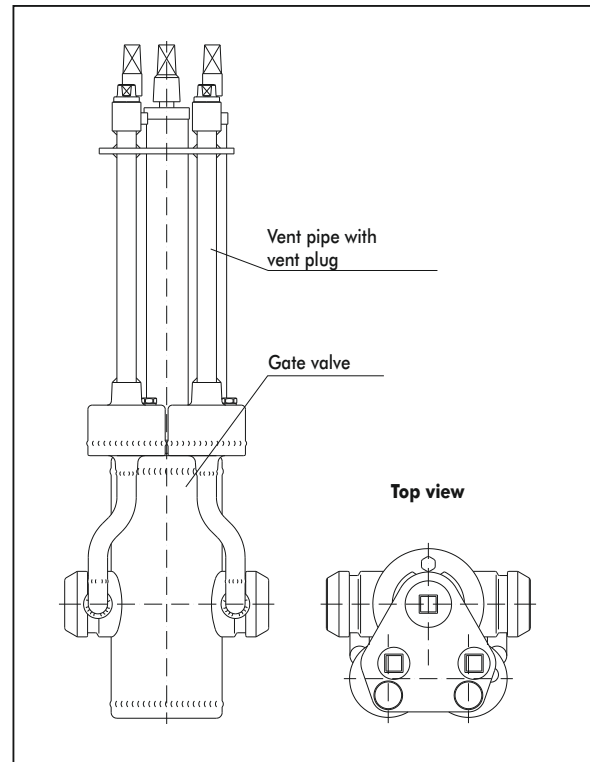


Rotary gate valve DSR

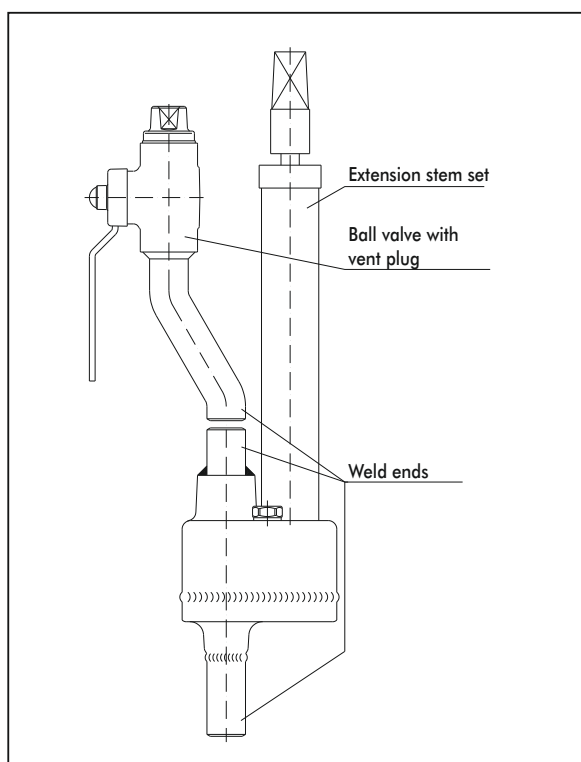
Picture 5
ASR with top arranged rotary gate valve



Picture 6
ASR with bottom arranged rotary gate valve



Picture 7
With top arranged vent pipe and ball valve



When in doubt about the correct manhole cover size required, please consult us.

Vent pipe:

Gate valves up to DN 100 only with DN 25/1" vent.

DN 50/2" vent on request.