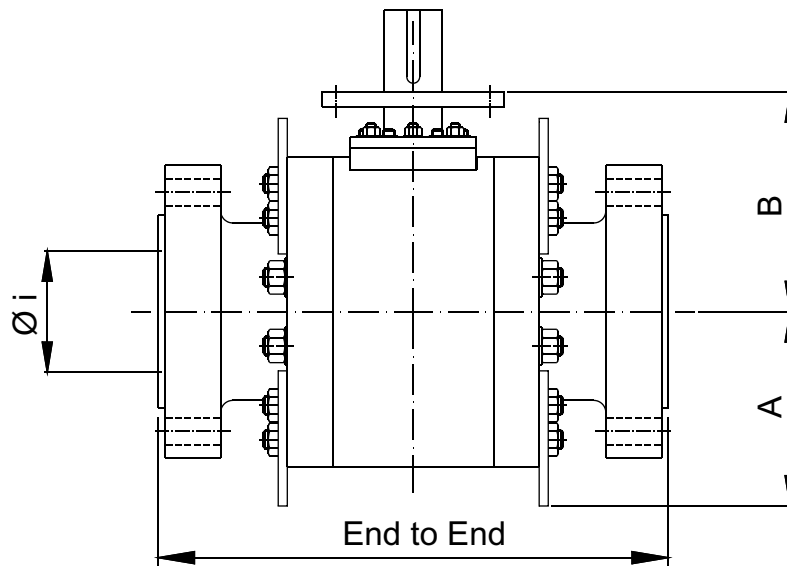


# Ball valve HKSF-SB

## Ball valve HKSF-SB

### Ball valve Split Body Type HKSF-SB ANSI Class 1500 / PN 250

- Three piece body
- with flanges or welding ends
- primary metal secondary soft sealing
- Full bore
- Double block and bleed
- Double or single piston
- Trunnion mounted
- Anti blow out stem
- Anti static design
- Temp. -10°C up to 80°C  
(special design for low and high temperature on request)



Size	Dimensions					Weight		
	DN	Ø i	End to End Dimensions			A	B	Weight BW (kg)
		AE	RF	RTJ				
150	146	705	705	711	280	320	340	500
200	194	832	832	841	320	370	650	840
250	241	991	991	1.000	370	415	1.480	1.480
300	289	1.130	1.130	1.146	415	500	2.250	2.250
400	362	1.384	1.384	1.407	530	610	3.700	4.100
500	452	1.664	1.664	1.686	650	800	6.900	7.800
600	532	2.043	2.043	2.071	860	920	13.100	14.500