



# The Connection to System Bus Gateway EcoGate

## The Connection to System Bus

**The EcoGate communication gateway is the connection to the System Bus and has been specially designed for natural gas measurement applications.**

Its inputs can be connected via Modbus to all Eco devices from RMA. In addition, the EcoGate gateway can be adjusted to equipment from other manufacturers.

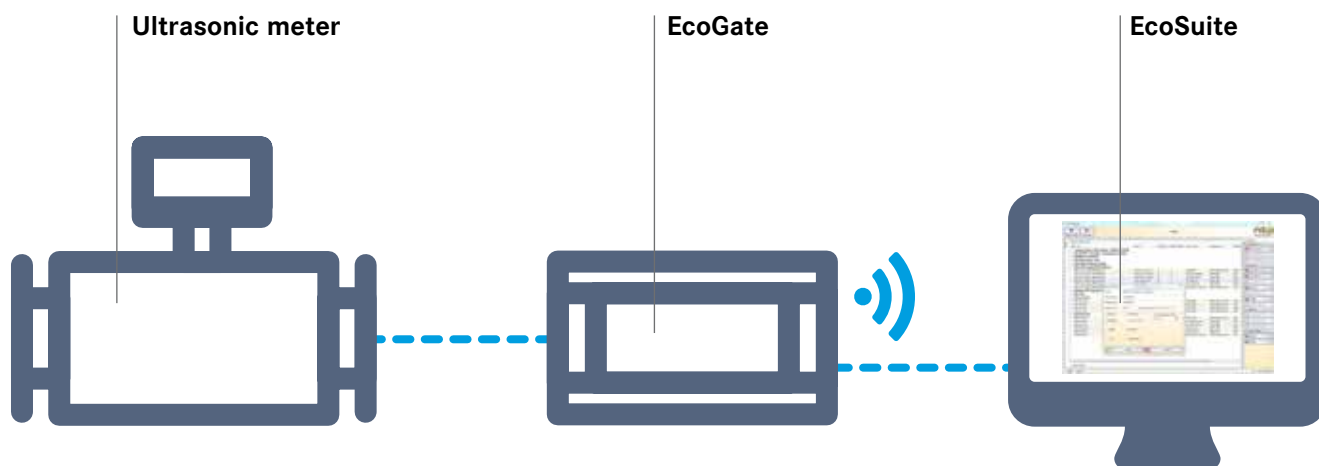
On the output side, the EcoGate gateway is connected to a System Bus A bus. Optionally, a System Bus-B connection via modem, GSM, GPRS and

LAN is available. In this way, any device can serve as a System Bus user and be accessed remotely via System Bus.

The settings on the EcoGate gateway can be made using the EcoSuite software.

The EcoGate gateway is suitable for both top-hat rail mounting and wall mounting. A 19" rack-mounting version is in preparation.

System Bus bus distributors and cables are also available.



### **RMA Mess- und Regeltechnik GmbH & Co. KG**

Forsthausstrasse 3 | D-77866 Rheinau

Phone +49 (0) 78 44/404-0

Fax +49 (0) 78 44/404-138

E-mail [mrt@rma-rheinau.de](mailto:mrt@rma-rheinau.de)

[www.rma-armaturen.de](http://www.rma-armaturen.de)

**Germany** RMA Kehl GmbH & Co. KG, Kehl  
RMA Rheinau GmbH & Co. KG, Rheinau  
RMA Training GmbH & Co. KG, Rheinau  
**France** RMA France S.A.S., Bischheim  
**Poland** RMA Polska Sp. z o. o., Chojnów  
**UK** RMA Pipeline Equipment Ltd., Batley  
**Bahrain** RMA Middle East S.P.C, Al Hidd  
**Russia** OOO RMA Rus, Elabuga

**rma**  
PIPELINE EQUIPMENT